



# Recreate Project

Grace Allred & Savannah Jeppson

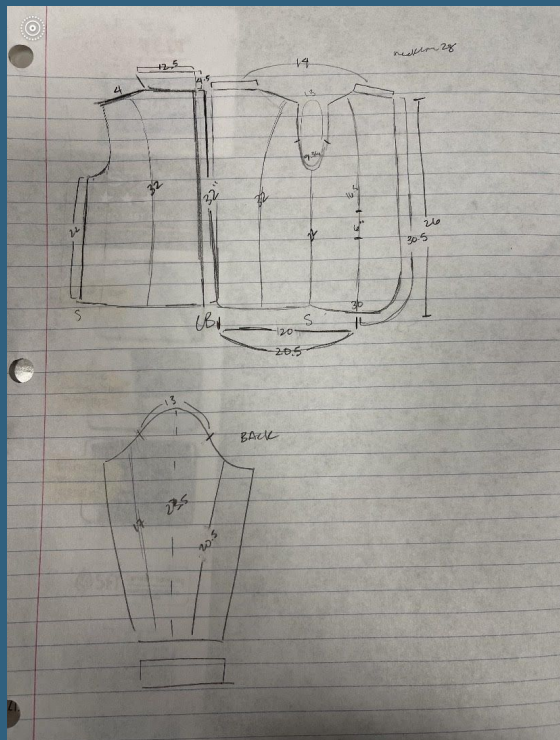
## Original Coat





## Characteristics

- 8 piece bodice
- 2 piece sleeve
- 2 piece collar
- 4 piece cuff
- 6 piece belt
- 2 Inseam pockets
- 6 large buttons
- 4 small buttons





# Adjustments/Final Design Choices

- 2 piece cuff
- Created a peter pan collar
- Total of 13 pieces



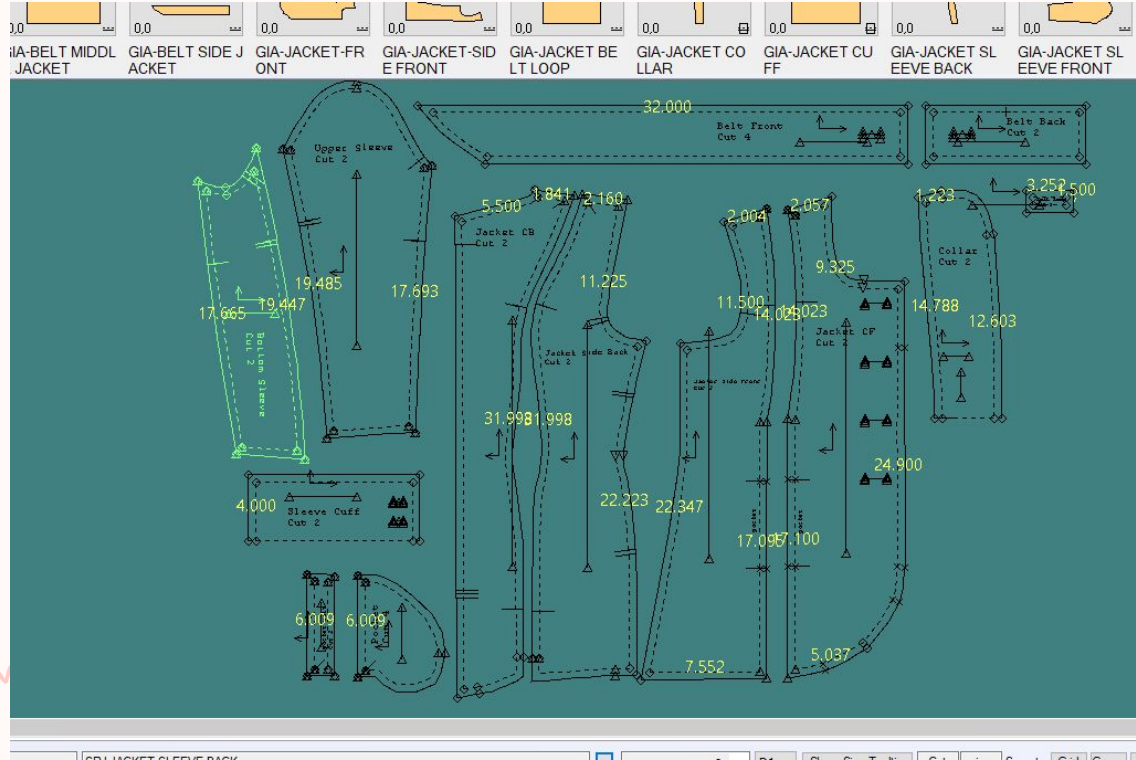
[illegible]



# Final pattern

## Savannah

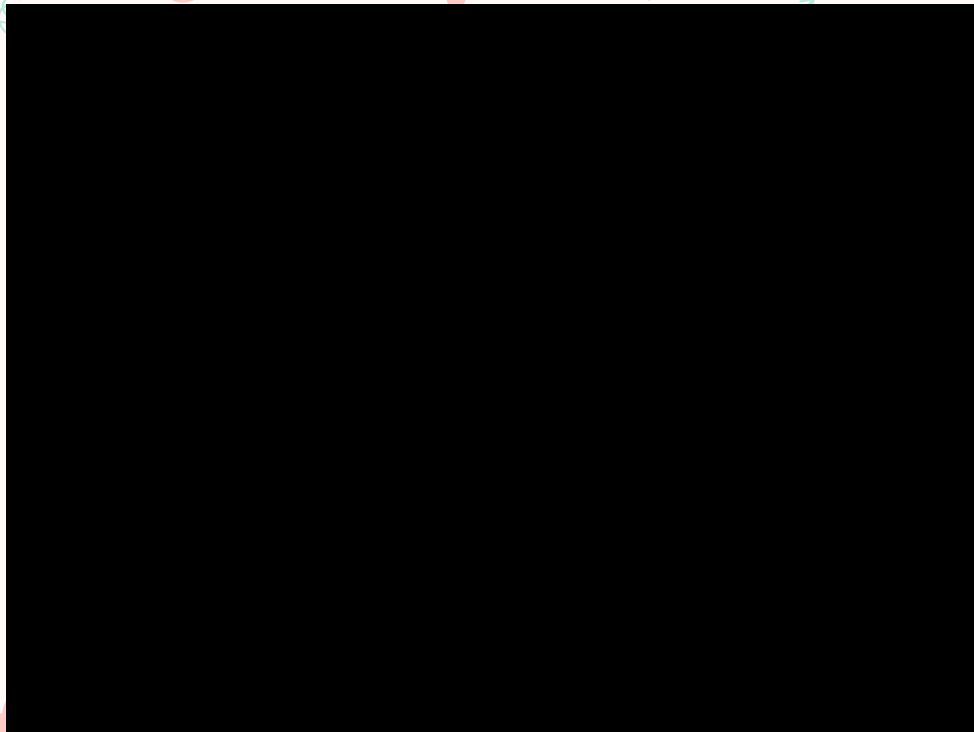
- Front pieces
- Sleeve pieces
- Cuff
- Pocket
- Facing
- Belt loop



## Grace

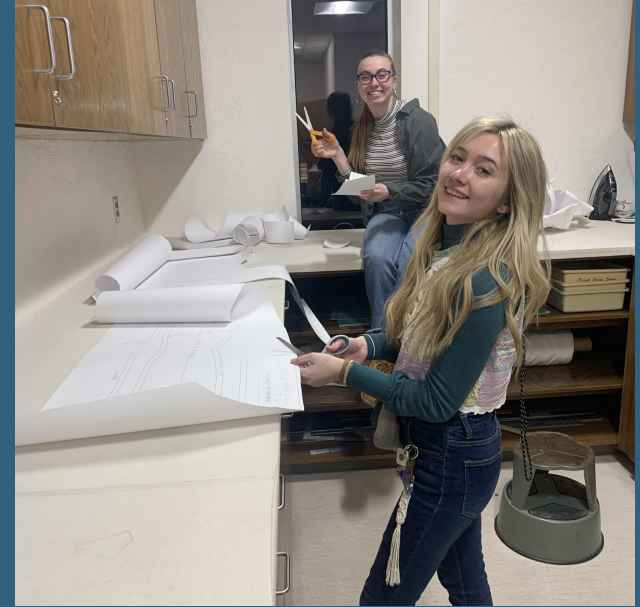
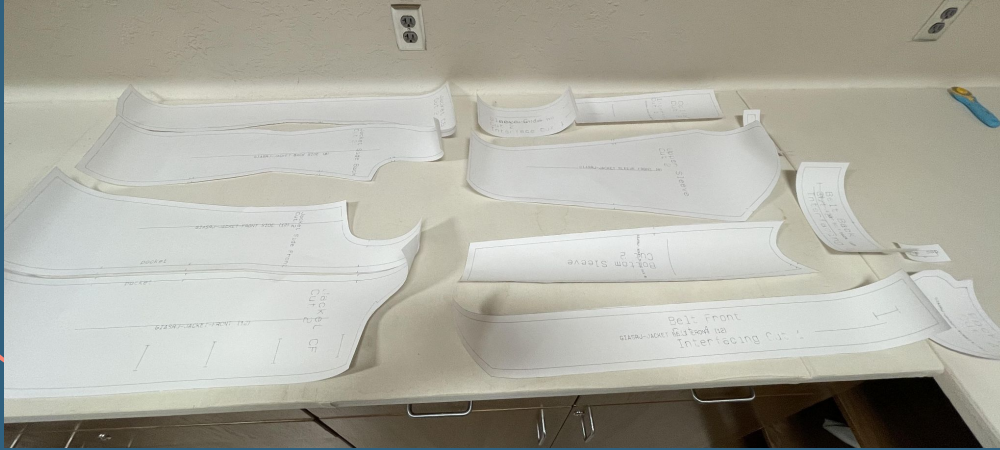
- Back pieces
- Belt pieces
- Collar

# Printing

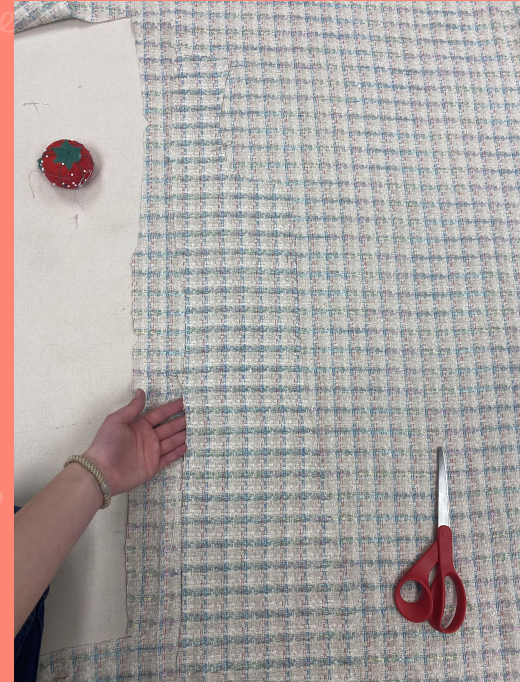
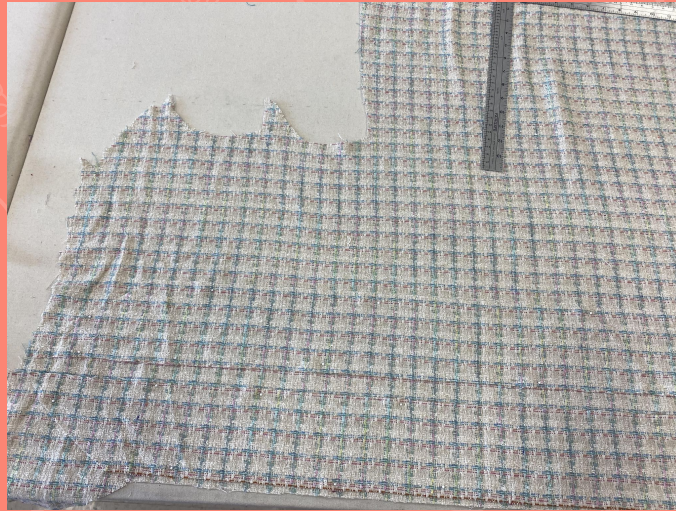




“

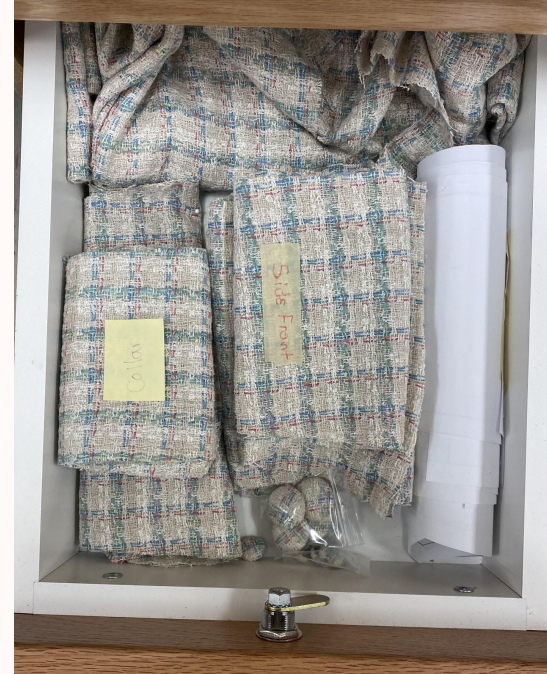


# Fabric and cutting





All Done! With cutting anyway...



## Flow Chart

**Covered Buttons**



**Stay-stitched  
EVERYTHING!**

**Serged  
EVERYTHING!**

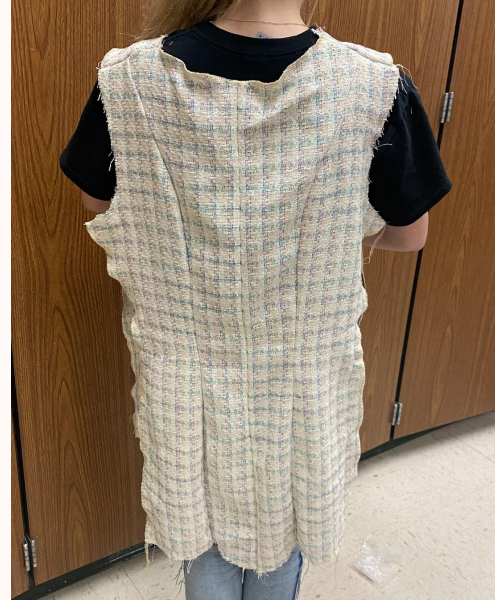
**Add facing to back  
pocket pieces**

**Attached pocket  
Pieces to panels**

**Sewed along  
seams encasing  
pocket**

## Flow Chart

### Matched and sewed up panels leaving sides open



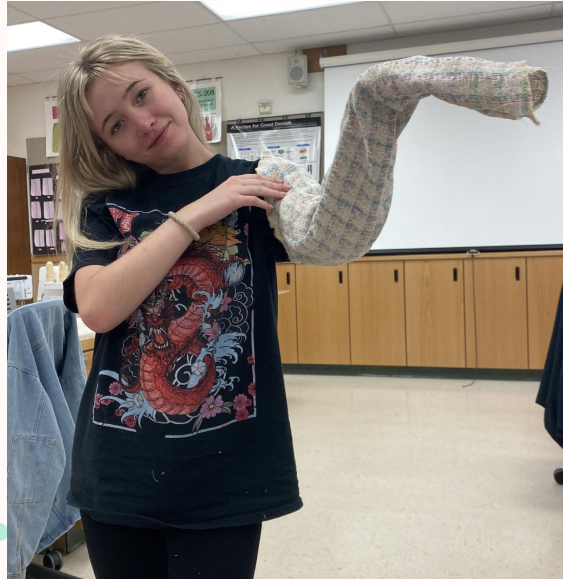


## Flow Chart

Sewed sleeve pieces together



Shortened sleeves



Put in sleeves, gathering at the top



## Flow Chart

Sewed interfacing  
to cuffs, collar and  
belt pieces

Attached cuffs to  
sleeves

Added buttonholes  
and buttons to cuff

Sewed on button  
band

Created four  
button holes and  
sewed on buttons

½' hem











## Tech Pack





# Thanks!

Any questions?